



TAI-SAW TECHNOLOGY CO., LTD.

No. 3, Industrial 2nd Rd., Ping-Chen Industrial District,
Taoyuan, 324, Taiwan, R.O.C.

TEL: 886-3-4690038 FAX: 886-3-4697532

E-mail: tstsales@mail.taisaw.com Web: www.taisaw.com


Product Specifications Approval Sheet

Product Name: SAW Filter 465MHz

TST Parts No.:TA0266A

Customer Parts No.:_____

| |
|-----------------------------|
| Customer signature required |
| Company:_____ |
| Division:_____ |
| Approved by :_____ |
| Date:_____ |

Checked by:_____ Anne Chen 

Approval by:_____ Andy Yu 

Date:_____ 2019/07/22

1. Customer signed back is required before TST can proceed with sample build and receive orders.
2. Orders received without customer signed back will be regarded as agreement on the specifications.
3. Any specifications changes must be approved upon by both parties and a new revision of specifications shall be released to reflect the changes.

SAW Filter 465 MHz

MODEL NO.: TA0266A

REV. NO.:3.0

A. MAXIMUM RATING:

1. Input Power Level: 0 dB_m
2. DC voltage: 10 V
3. Operating Temperature: -10°C to +50°C
4. Storage Temperature: -40°C to +85°C
5. Moisture Sensitivity Level: Level 1(MSL1)

RoHS Compliant
Lead free
Lead-free soldering

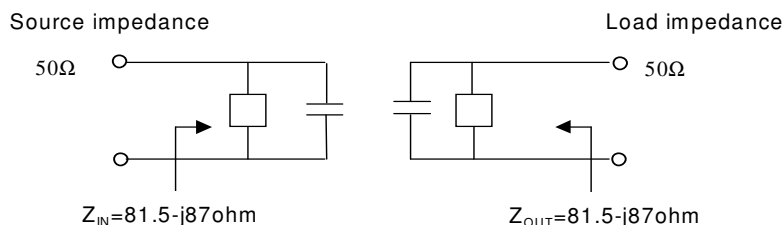
Electrostatic Sensitive Device

B. ELECTRICAL CHARACTERISTICS:

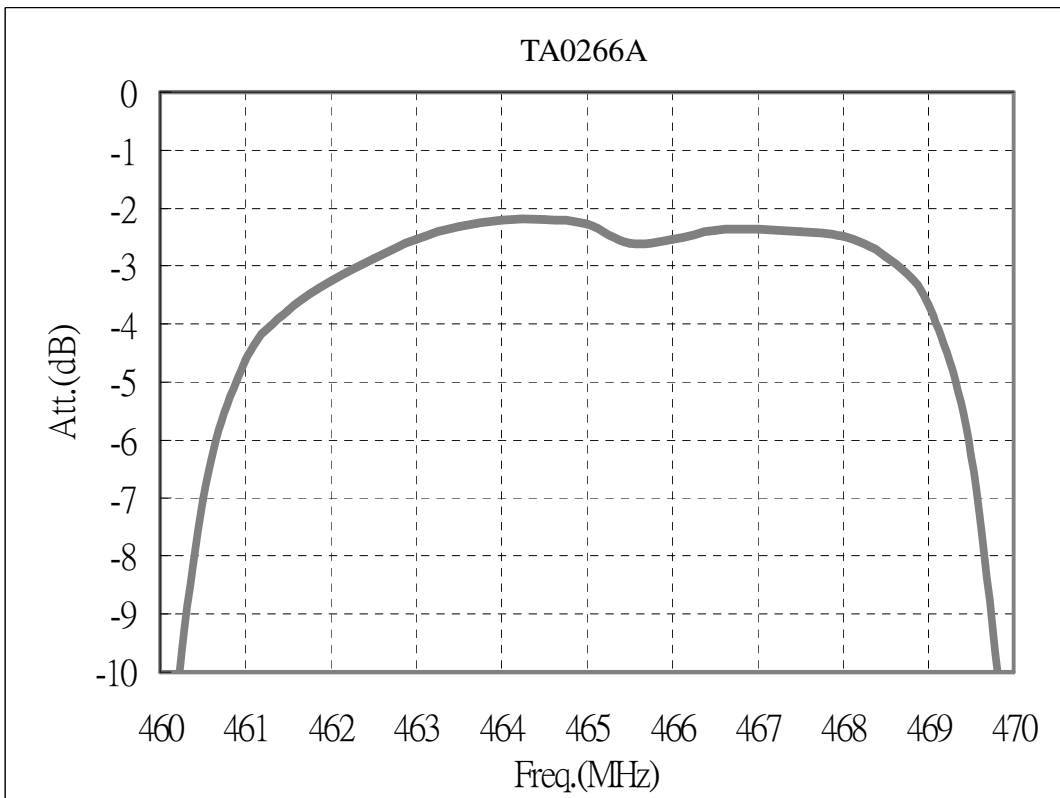
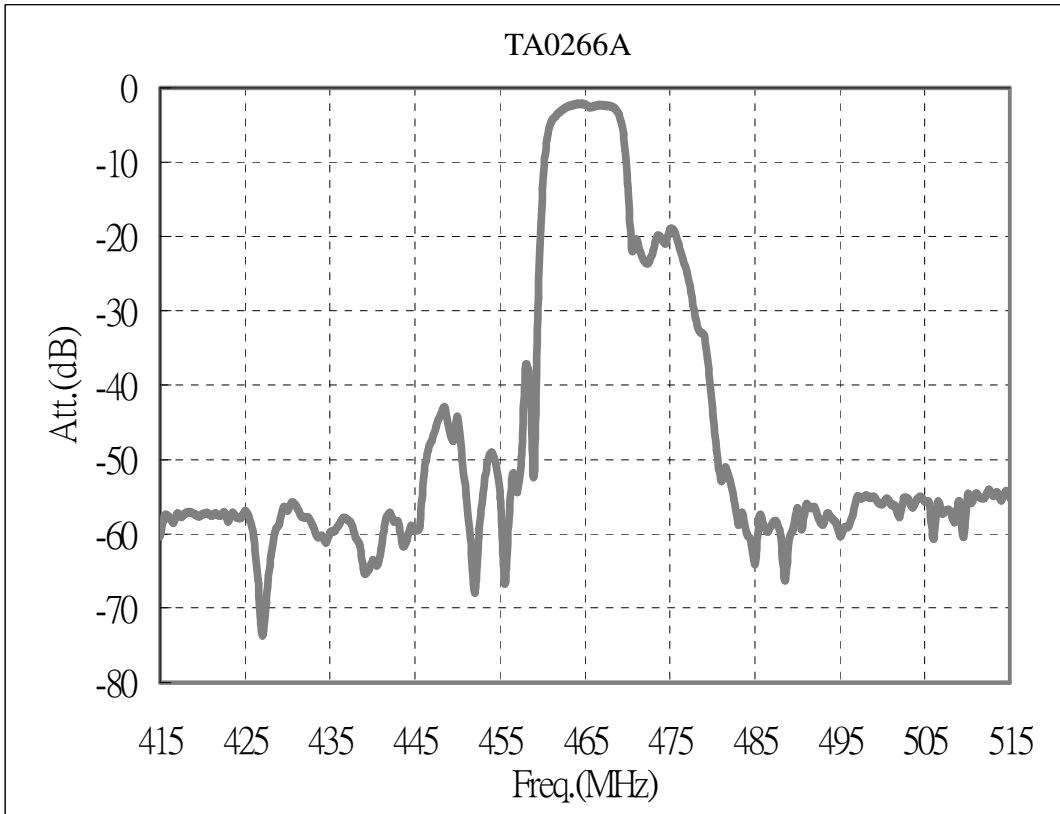
| Item | Min. | Typical | Max. |
|--|------|----------|------|
| Center frequency F_c (dB) | - | 465.1375 | - |
| Insertion loss (F _C ±2.5875 MHz) IL (dB) | - | - | 4.0 |
| Amplitude ripple (F _C ±2.5875 MHz) (dB) | - | - | 2.0 |
| Attenuation (Reference level from 0 dB) | | | |
| 365.1375 ~ 424.3375 MHz (dB) | 50 | - | - |
| 451.5 ~ 457.0 MHz (dB) | 15 | - | - |
| 495.1375 ~ 565.1375 MHz (dB) | 50 | - | - |
| Source impedance Z_s (Ω) | - | 81.5-j87 | - |
| Load impedance Z_L (Ω) | - | 81.5-j87 | - |

Note1. The standard definitions is in JIS C 6703

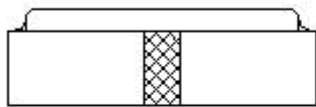
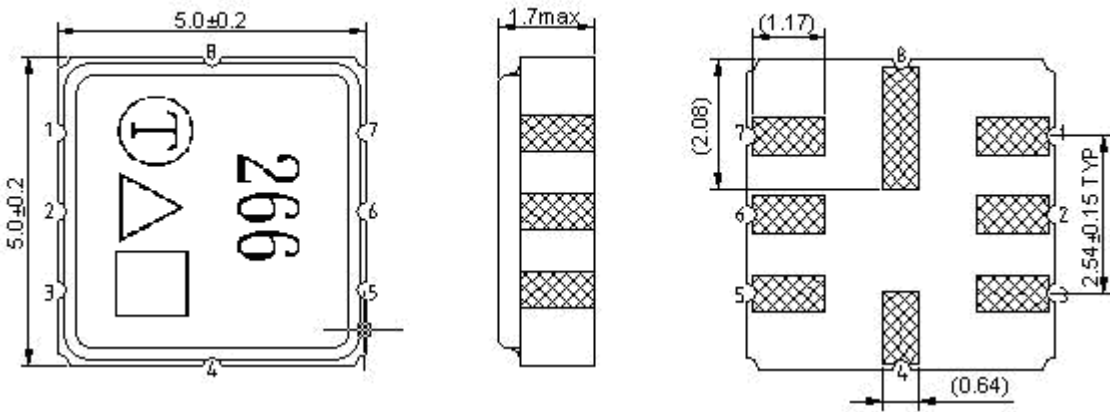
Note2.



C. Frequency Characteristics :



D.OUTLINE DRAWING:



#2 : Input
 #6 : Output
 #1、3、4、5、7、8 : Ground
 △ : Year code
 □ : Date code
 Unit : mm

Product / Year Code- 4year cycle

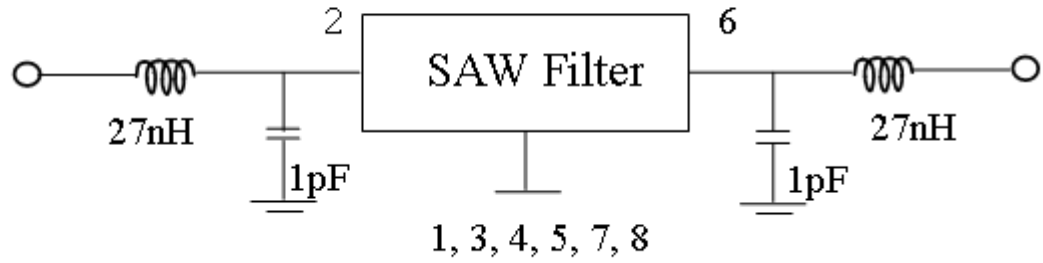
| | | | | |
|--------------|--------------|--------------|--------------|--------------|
| Year | 2017 2021 | 2018 2022 | 2019 2023 | 2020 2024 |
| Product Code | A | a | <u>A</u> | <u>a</u> |

Week Code Table

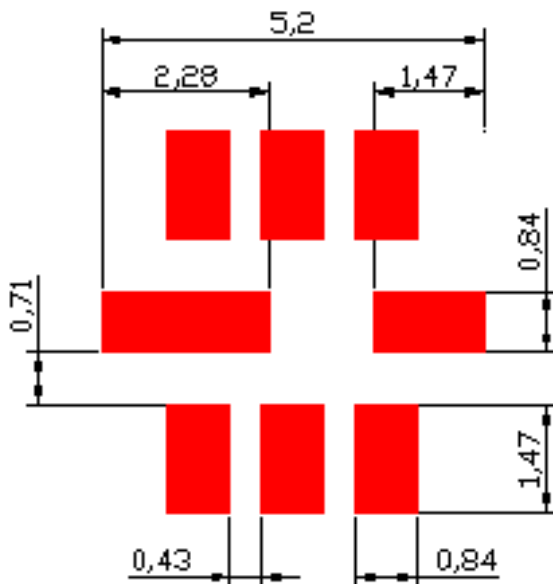
| | | | | | | | | | | | | |
|------|------|------|------|------|------|------|------|------|------|------|------|------|
| WK01 | WK02 | WK03 | WK04 | WK05 | WK06 | WK07 | WK08 | WK09 | WK10 | WK11 | WK12 | WK13 |
| A | B | C | D | E | F | G | H | I | J | K | L | M |
| WK14 | WK15 | WK16 | WK17 | WK18 | WK19 | WK20 | WK21 | WK22 | WK23 | WK24 | WK25 | WK26 |
| N | O | P | Q | R | S | T | U | V | W | X | Y | Z |
| WK27 | WK28 | WK29 | WK30 | WK31 | WK32 | WK33 | WK34 | WK35 | WK36 | WK37 | WK38 | WK39 |
| a | b | c | d | e | f | g | h | i | j | k | l | m |
| WK40 | WK41 | WK42 | WK43 | WK44 | WK45 | WK46 | WK47 | WK48 | WK49 | WK50 | WK51 | WK52 |
| n | o | p | q | r | s | t | u | v | w | x | y | z |

E. MEASUREMENT CIRCUIT:

HP Network analyzer

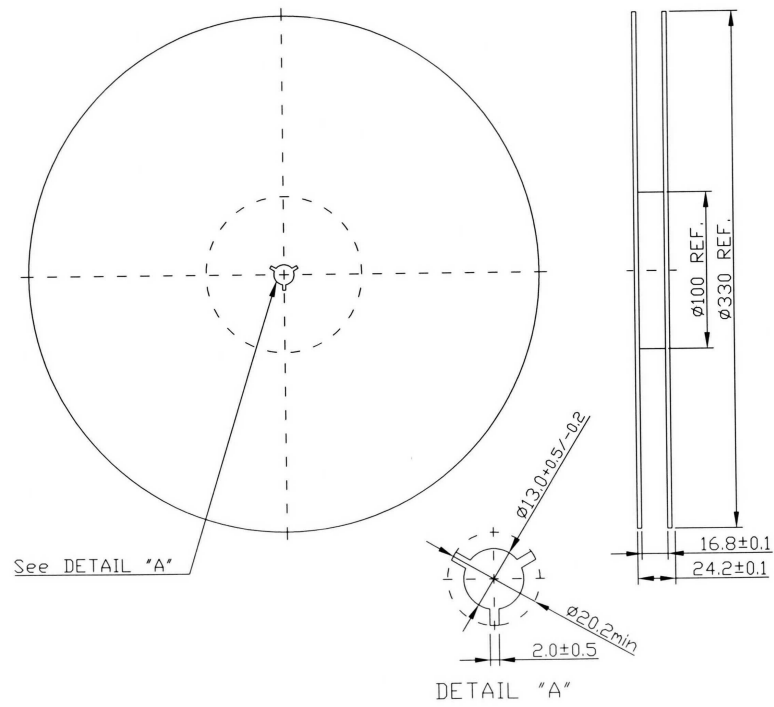


F. PCB FOOTPRINT:

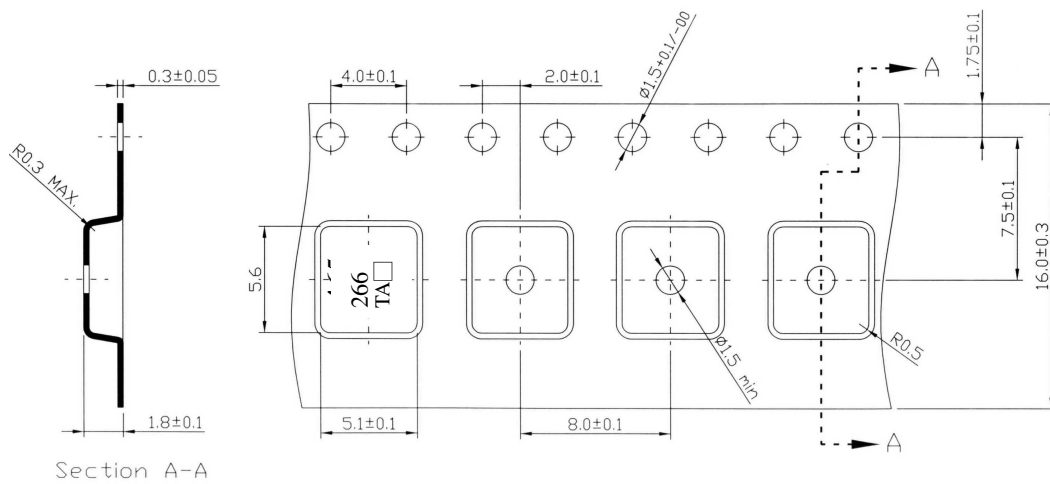


G. PACKING:

1. REEL DIMENSION (Please refer to FR-75D10 for packing quantity)



2. TAPE DIMENSION



H. RECOMMENDED REFLOW PROFILE:

1. Preheating shall be fixed at 150~180°C for 60~90 seconds.
2. Ascending time to preheating temperature 150°C shall be 30 seconds min.
3. Heating shall be fixed at 220°C for 50~80 seconds and at 260°C +0/-5°C peak (20~40sec).
4. Time: 2 times.

