

SOT-323 Plastic-Encapsulate Transistors

BC856W TRANSISTOR (PNP)

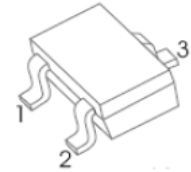
BC857W

BC858W

FEATURES

- Ideally suited for automatic insertion
- For Switching and AF Amplifier Applications

SOT-323



1. BASE
2. EMITTER
3. COLLECTOR

MAXIMUM RATINGS (T_a=25°C unless otherwise noted)

| Symbol | Parameter | Value | Unit |
|-----------------------------------|--|----------|------|
| V _{CBO} | Collector-Base Voltage | | |
| | BC856W | -80 | V |
| | BC857W | -50 | |
| | BC858W | -30 | |
| V _{CEO} | Collector-Emitter Voltage | | |
| | BC856W | -65 | V |
| | BC857W | -45 | |
| | BC858W | -30 | |
| V _{EBO} | Emitter-Base Voltage | -5 | V |
| I _c | Collector Current –Continuous | -0.1 | A |
| P _{C*} | Collector Power Dissipation | 150 | mW |
| R _{θJA} | Thermal Resistance From Junction To Ambient | 833 | °C/W |
| T _J , T _{stg} | Operation Junction and Storage Temperature Range | -55~+150 | °C |

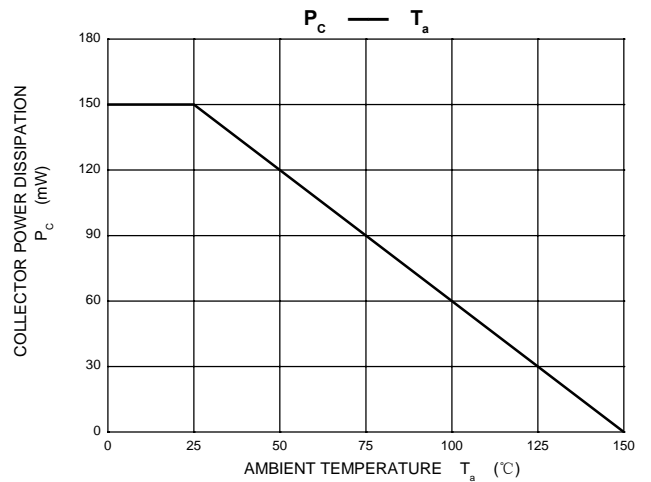
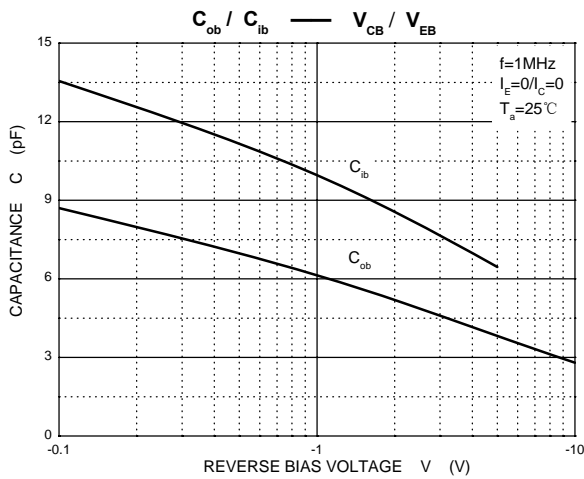
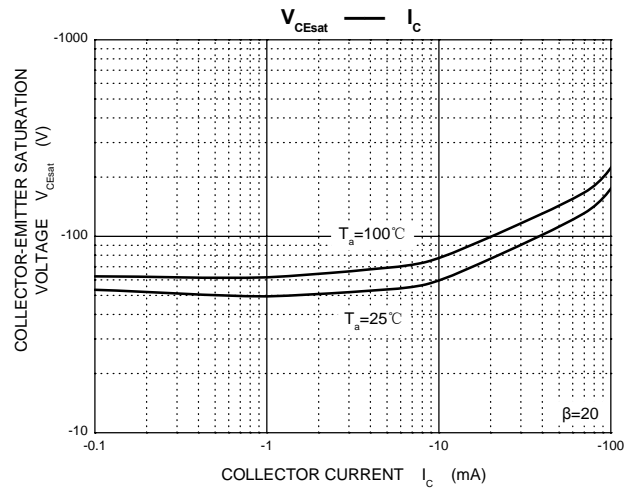
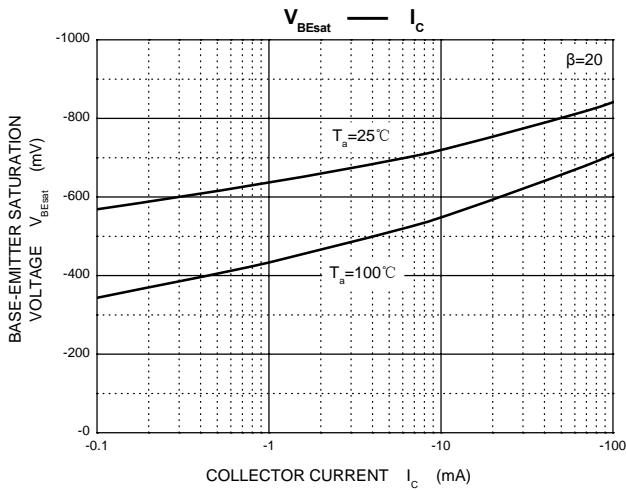
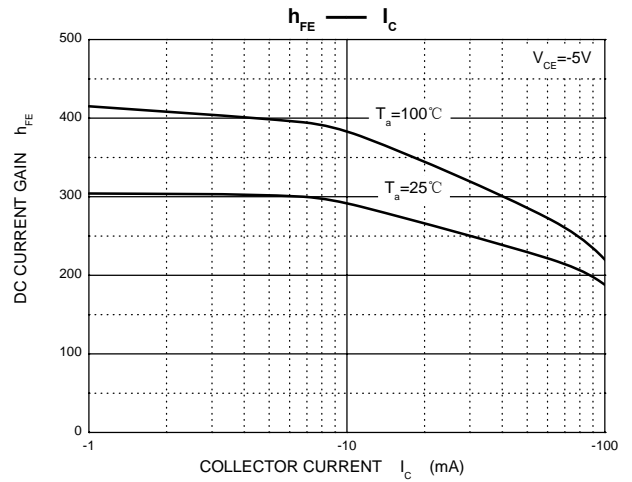
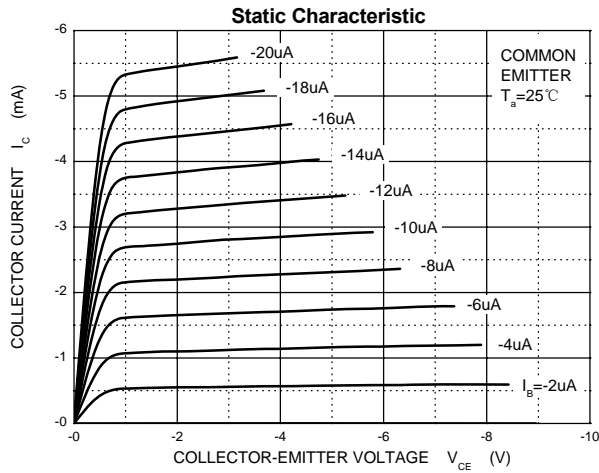
DEVICE MARKING

BC856AW=3A; BC856BW=3B;
 BC857AW=3E; BC857BW=3F; BC857CW=3G;
 BC858AW=3J; BC858BW=3K; BC858CW=3L

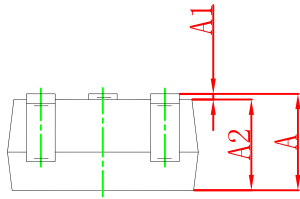
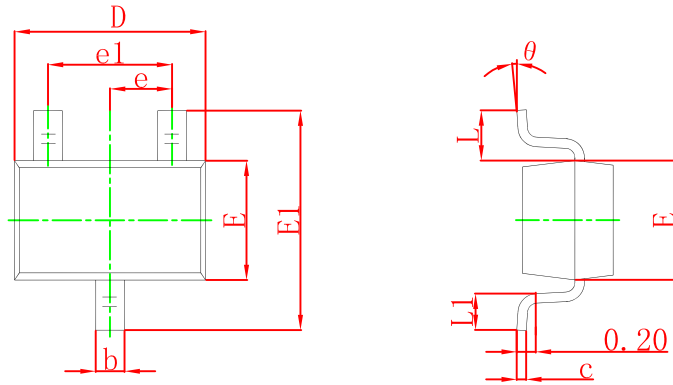
ELECTRICAL CHARACTERISTICS (T_a=25°C unless otherwise specified)

| Parameter | Symbol | Test conditions | Min | Max | Unit |
|---|----------------------|---|-------------------|-------------------|------|
| Collector-base breakdown voltage BC856W BC857W BC858W | V _{CBO} | I _C = -10μA, I _E =0 | -80 -50 -30 | | V |
| Collector-emitter breakdown voltage BC856W BC857W BC858W | V _{CEO} | I _C = -10mA, I _B =0 | -65 -45 -30 | | V |
| Emitter-base breakdown voltage | V _{EBO} | I _E = -1μA, I _C =0 | -5 | | V |
| Collector cut-off current | I _{CBO} | V _{CB} = -30 V , I _E =0 | | -15 | nA |
| DC current gain BC856AW, 857AW,858AW BC856BW, 857BW,858BW BC857CW,BC858CW | h _{FE} | V _{CE} = -5V, I _C = -2mA | 125 220 420 | 250 475 800 | |
| Collector-emitter saturation voltage | V _{CE(sat)} | I _C =-100mA, I _B = -5mA | | -0.65 | V |
| Base-emitter saturation voltage | V _{BE(sat)} | I _C = -100mA, I _B = -5mA | | -1.1 | V |
| Transition frequency | f _T | V _{CE} = -5V, I _C = -10mA f=100MHz | 100 | | MHz |
| Collector capacitance | C _{ob} | V _{CB} =-10V, f=1MHz | | 4.5 | pF |

Typical Characteristics

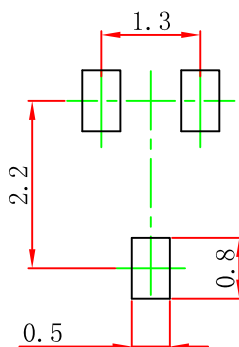


SOT-323 Package Outline Dimensions



| Symbol | Dimensions In Millimeters | | Dimensions In Inches | |
|--------|---------------------------|-------|----------------------|-------|
| | Min | Max | Min | Max |
| A | 0.900 | 1.100 | 0.035 | 0.043 |
| A1 | 0.000 | 0.100 | 0.000 | 0.004 |
| A2 | 0.900 | 1.000 | 0.035 | 0.039 |
| b | 0.200 | 0.400 | 0.008 | 0.016 |
| c | 0.080 | 0.150 | 0.003 | 0.006 |
| D | 2.000 | 2.200 | 0.079 | 0.087 |
| E | 1.150 | 1.350 | 0.045 | 0.053 |
| E1 | 2.150 | 2.450 | 0.085 | 0.096 |
| e | 0.650 TYP | | 0.026 TYP | |
| e1 | 1.200 | 1.400 | 0.047 | 0.055 |
| L | 0.525 REF | | 0.021 REF | |
| L1 | 0.260 | 0.460 | 0.010 | 0.018 |
| θ | 0° | 8° | 0° | 8° |

SOT-323 Suggested Pad Layout



Note:

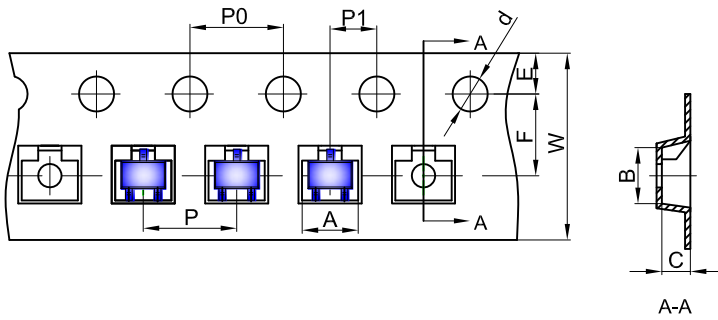
1. Controlling dimension: in millimeters.
2. General tolerance: ± 0.05 mm.
3. The pad layout is for reference purposes only.

NOTICE

JSCJ reserves the right to make modifications, enhancements, improvements, corrections or other changes without further notice to any product herein. JSCJ does not assume any liability arising out of the application or use of any product described herein.

SOT-323 Tape and Reel

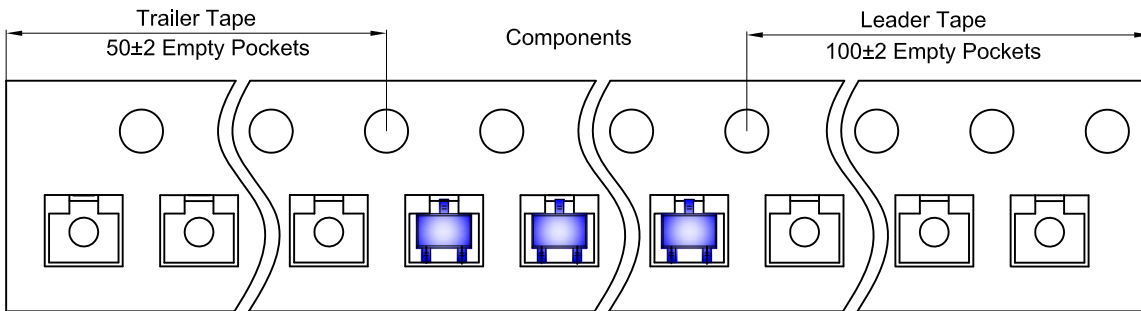
SOT-323 Embossed Carrier Tape



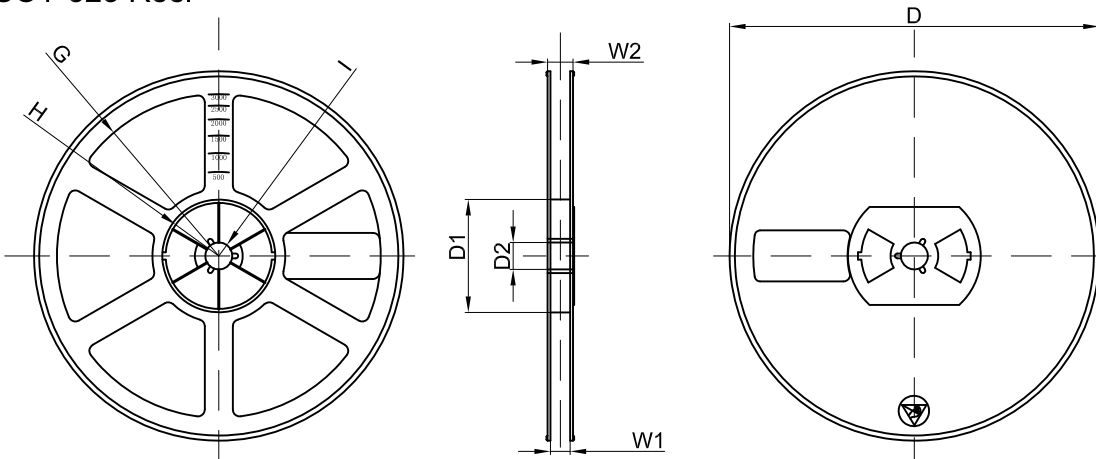
Packaging Description:
 SOT-323 parts are shipped in tape. The carrier tape is made from a dissipative (carbon filled) polycarbonate resin. The cover tape is a multilayer film (Heat Activated Adhesive in nature) primarily composed of polyester film, adhesive layer, sealant, and anti-static sprayed agent. These reeled parts in standard option are shipped with 3,000 units per 7" or 17.8cm diameter reel. The reels are clear in color and is made of polystyrene plastic (anti-static coated).

| Dimensions are in millimeter | | | | | | | | | | |
|------------------------------|------|------|------|-------|------|------|------|------|------|------|
| Pkg type | A | B | C | d | E | F | P0 | P | P1 | W |
| SOT-323 | 2.25 | 2.55 | 1.19 | Ø1.55 | 1.75 | 3.50 | 4.00 | 4.00 | 2.00 | 8.00 |

SOT-323 Tape Leader and Trailer



SOT-323 Reel



| Dimensions are in millimeter | | | | | | | | |
|------------------------------|---------|-------|-------|--------|--------|-------|------|-------|
| Reel Option | D | D1 | D2 | G | H | I | W1 | W2 |
| 7" Dia | Ø178.00 | 54.40 | 13.00 | R78.00 | R25.60 | R6.50 | 9.50 | 12.30 |

| REEL | Reel Size | Box | Box Size(mm) | Carton | Carton Size(mm) | G.W.(kg) |
|----------|-----------|------------|--------------|-------------|-----------------|----------|
| 3000 pcs | 7 inch | 45,000 pcs | 203×203×195 | 180,000 pcs | 438×438×220 | |