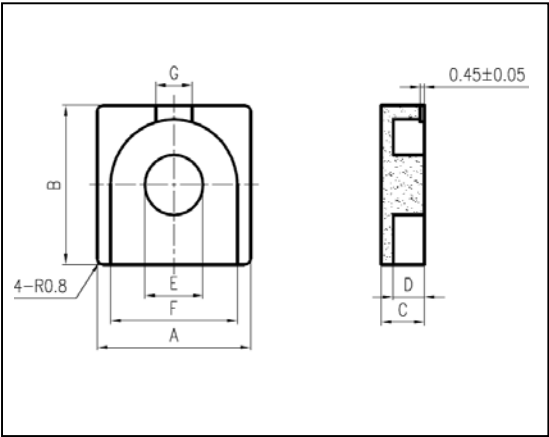
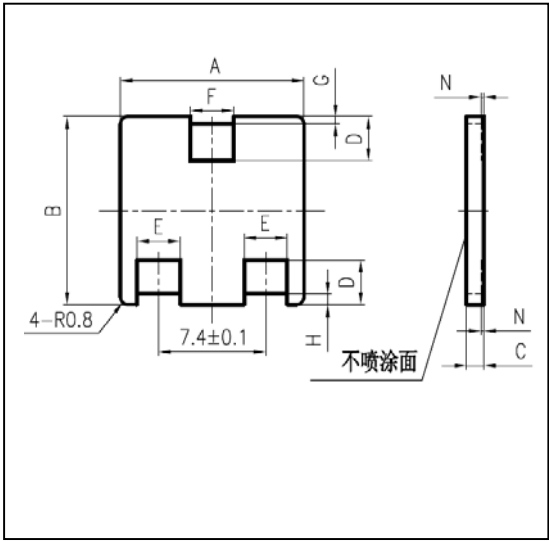


CORE SETS

Dimensions (mm)		Before coating	After coating
DQY12.7D	A	12.6±0.25	12.7±0.25
	B	12.6±0.25	12.7±0.25
	C	4.05±0.1	4.1±0.1
	D	2.85±0.1	2.9±0.1
	E	φ4.8±0.15	φ4.8±0.15
	F	10.5±0.3	10.5±0.3
	G	2.9±0.15	2.9±0.15



Dimensions (mm)		Before coating	After coating
DQY12.7DI	A	12.6±0.25	12.7±0.25
	B	12.6±0.25	12.7±0.25
	C	1.10±0.1	1.15±0.1
	D	3.0±0.35	3.0±0.35
	E	3.1±0.35	3.0±0.35
	F	3.1±0.35	3.0±0.35
	G	0.5±0.15	0.5±0.15
	H	0.7±0.15	0.7±0.15
	N	0.3±0.05	0.3±0.05



Characteristic

GRADE	AL(nH/N2)	Percent initial Permeability (%μi)		Core Loss (mW/cm ³)	
	f=100KHz V= 0.1V	50 Oe	100 Oe	50kHz/100mT	100kHz/100mT
F055	85	73	57	1400	3000

*备注: Percent initial Permeability和CORE LOSS是压制标准环D*270后的材料典型值, 仅供参考